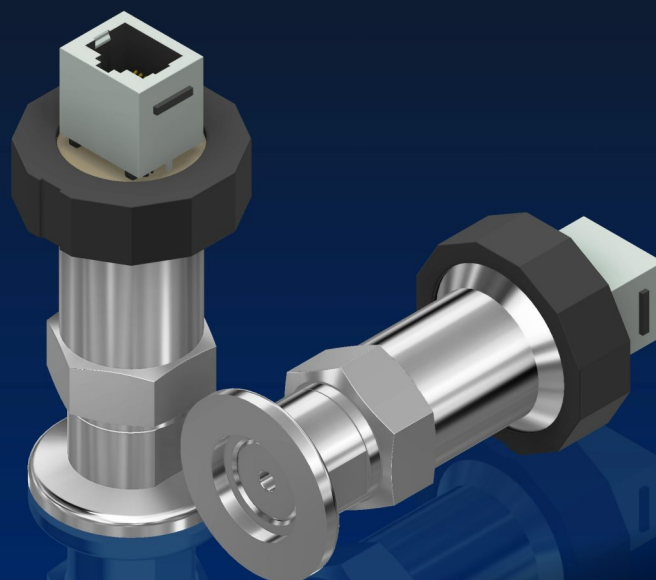




# JEVAmet<sup>®</sup> PZM-2000

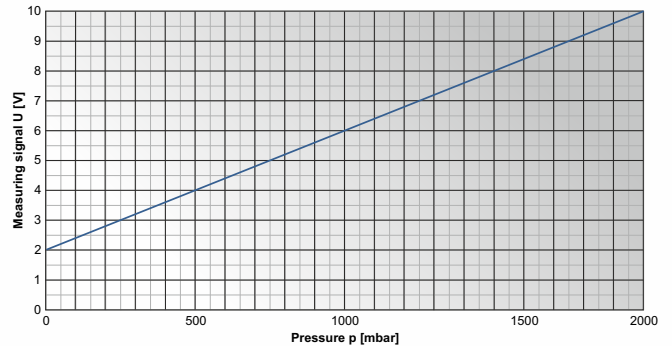
## Active piezoresistive vacuum gauge

- absolute pressure vacuum gauge with piezoresistive pressure sensor
- pressure sensor with four-wire technology
- vibration immunity
- gas type independency
- alignment is not necessary
- compact design with stainless steel housing
- linear analog output signal +2 – +10 VDC
- supply voltage +15 – +30 VDC
- Vacuum connection via flange DN16KF with internal screw thread G 1/4"
- compatible with controllers made by JEVATEC, LEYBOLD, PFEIFFER VACUUM und INFICON

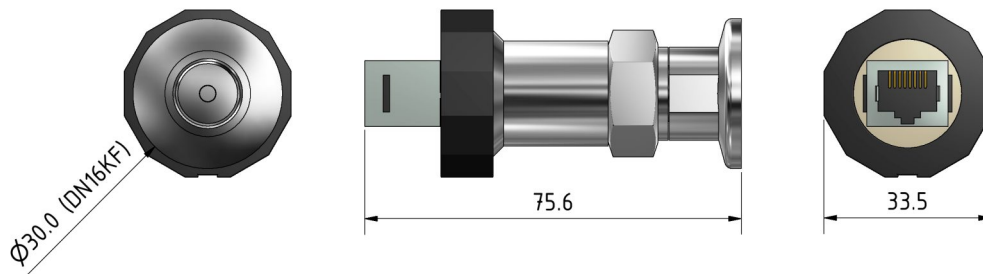


## Technical Data

<b>Vacuum measurement:</b>	Measuring range:	0 – 2000 mbar
	Measuring principle:	piezoresistive
	Accuracy:	± 0.25 % of final value
	Reproducibility:	± 0.1 % FS
	Update time:	0.5 ms
	Response time:	1 ms
	Settling time:	10 ms approx.
<b>Sensor:</b>	Mounting position:	arbitrary
	Overpressure stability:	1.5 bar abs.
	Dead volume:	Sensor: 0.3 cm <sup>3</sup> , Sensor with sealing ring: 1.5 cm <sup>3</sup>
<b>Materials:</b>	Materials in vacuum:	Stainless steel 304 and 316L, Viton <sup>®</sup> O-ring
<b>Power requirements:</b>	Supply voltage:	+ 24 VDC (SELV-E according EN 61010)
	Current consumption:	5 mA max.
	Power consumption:	0.12 W max.
	Connection:	RJ45 (FCC 68)
<b>Identification:</b>	Ident resistant:	8.2 kΩ (identification as DU 2000 sensor) compatible with the following vacuum controllers: JEVATEC – JEVAmet <sup>®</sup> VCU LEYBOLD – DISPLAY , CENTER , GRAPHIX series PFEIFFER VACUUM – CenterLine INFICON – VGC400- und VGC500-Serie
<b>Analog output signal:</b>	Output voltage:	+2 – +10 VDC
	Relationship between measuring signal and pressure:	
		$U = (0.004 \text{ V} \times p / \text{mbar}) + 2 \text{ V}$ $p = (U - 2 \text{ V} / 0.004 \text{ V}) \times \text{mbar}$
<b>Environment:</b>	Settling time after pressure leap:	< 5 ms
	Temperature:	Storage: -20 – +60 °C Operation: +5 – +45 °C (sea level)
	Beakout temperature:	80 °C max. at flange
	Relative atmospheric humidity:	80 % max. (up to 30 °C) decreasing to 50 % max. (over 40 °C)
	Usage:	indoors (altitude 2000 m max. above sea level)
<b>Weight:</b>	Degree of protection :	Ip40
	0.12 kg approx.	



## Dimensions



(all dimensions in mm)

## More information under:

**JEVATEC GmbH**  
D-07743 Jena, Schreckenbachweg 8  
Phone: +49 3641 3596-0  
Fax: +49 3641 3596-39  
E-mail: [info@jevatec.de](mailto:info@jevatec.de)

**JEVATEC**  
Ideen in der Vakuumtechnik  
[www.jevatec.de](http://www.jevatec.de)

